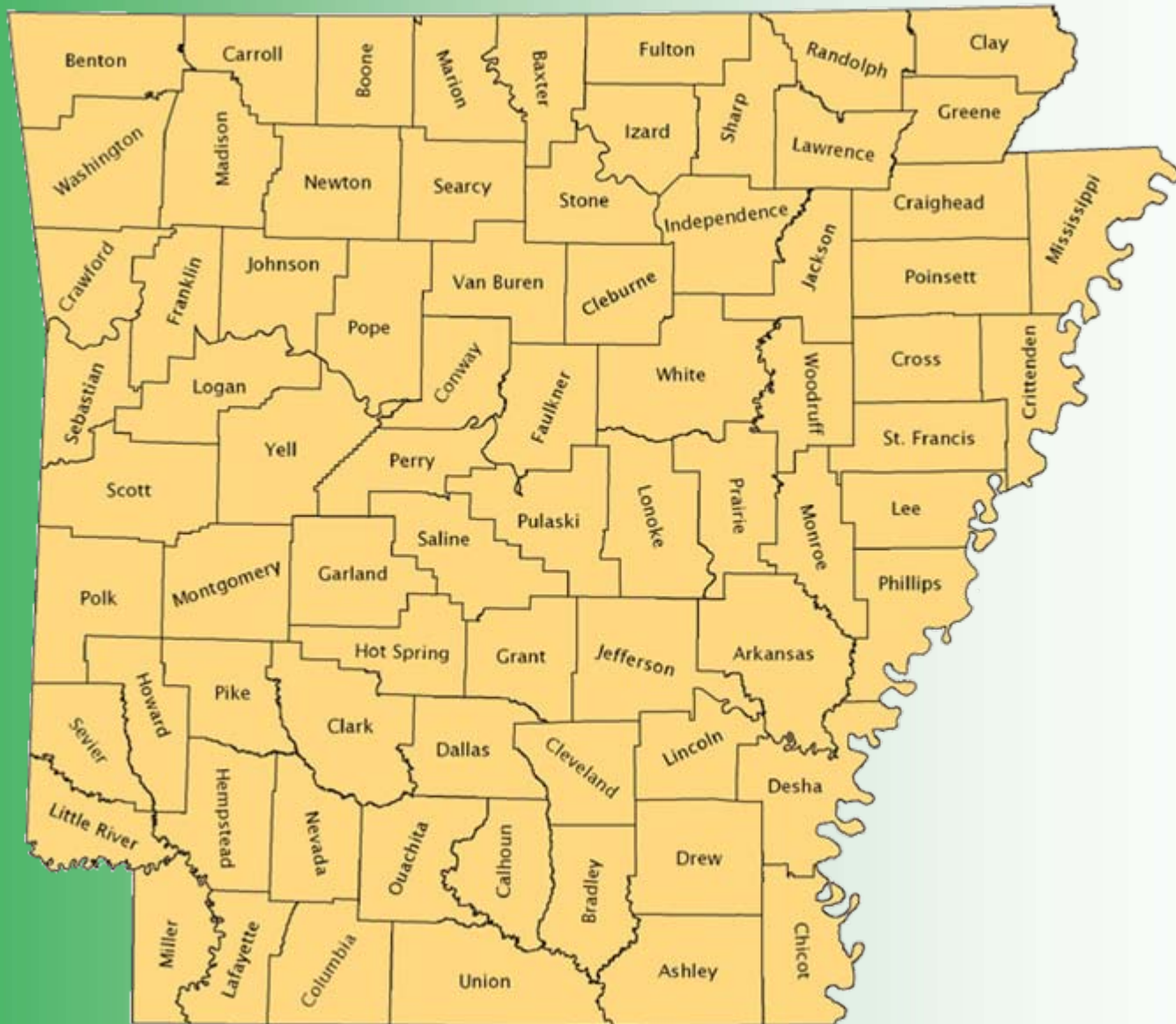


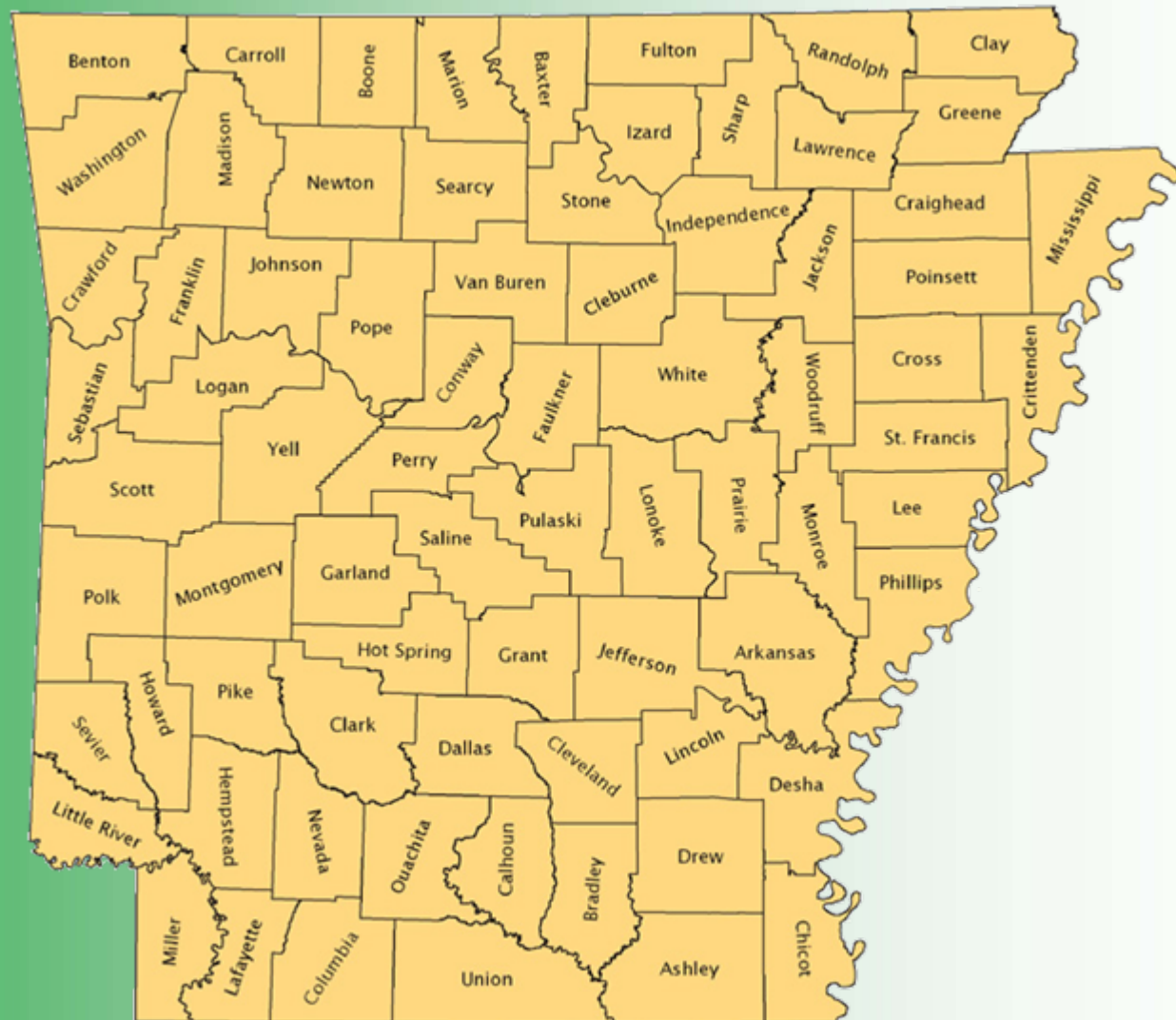
AETN - A Journey of the Six Regions of Arkansas



In which county do you live?



What is the name of the capital city of Arkansas and where is it located?



What is the name of the capital city of Arkansas and where is it located?



Little Rock is the capital city of Arkansas and is located in Pulaski County

Can you identify Arkansas's state symbols?

The state
gem

The
diamond



The state
mineral

quartz
crystal



The state rock

Bauxite

Can you identify Arkansas's state symbols?

The state
anthems

(click each for lyrics)

[Arkansas \(You Run Deep in Me\)](#)

[Oh, Arkansas](#)

[Arkansas](#)

[The Arkansas Traveler \(with music!\)](#)



The state
mammal

White-
tailed deer

Do You Know These Important Arkansans?



Meet President Bill Clinton

William Jefferson Clinton, 40th and 42nd governor of Arkansas and 42nd president of the US.

<http://www.encyclopediaofarkansas.net/encyclopedia/media-detail.aspx?mediaID=5947>

Do You Know These Important Arkansans?

Meet Daisy Gaston Bates



Daisy Lee Gatson Bates, a civil rights activist and mentor to the Little Rock Nine, the African-American students who desegregated Central High School in Little Rock (Pulaski County); circa 1960.

<http://www.encyclopediaofarkansas.net/encyclopedia/media-detail.aspx?mediaID=3786>



Daisy Bates with Arkansas governor Bill Clinton at the dedication of the National Civil Rights Museum in Memphis, Tennessee; July 1991.

<http://www.encyclopediaofarkansas.net/encyclopedia/media-detail.aspx?mediaID=2072>

Do You Know These Important Arkansans?

Arkansans?

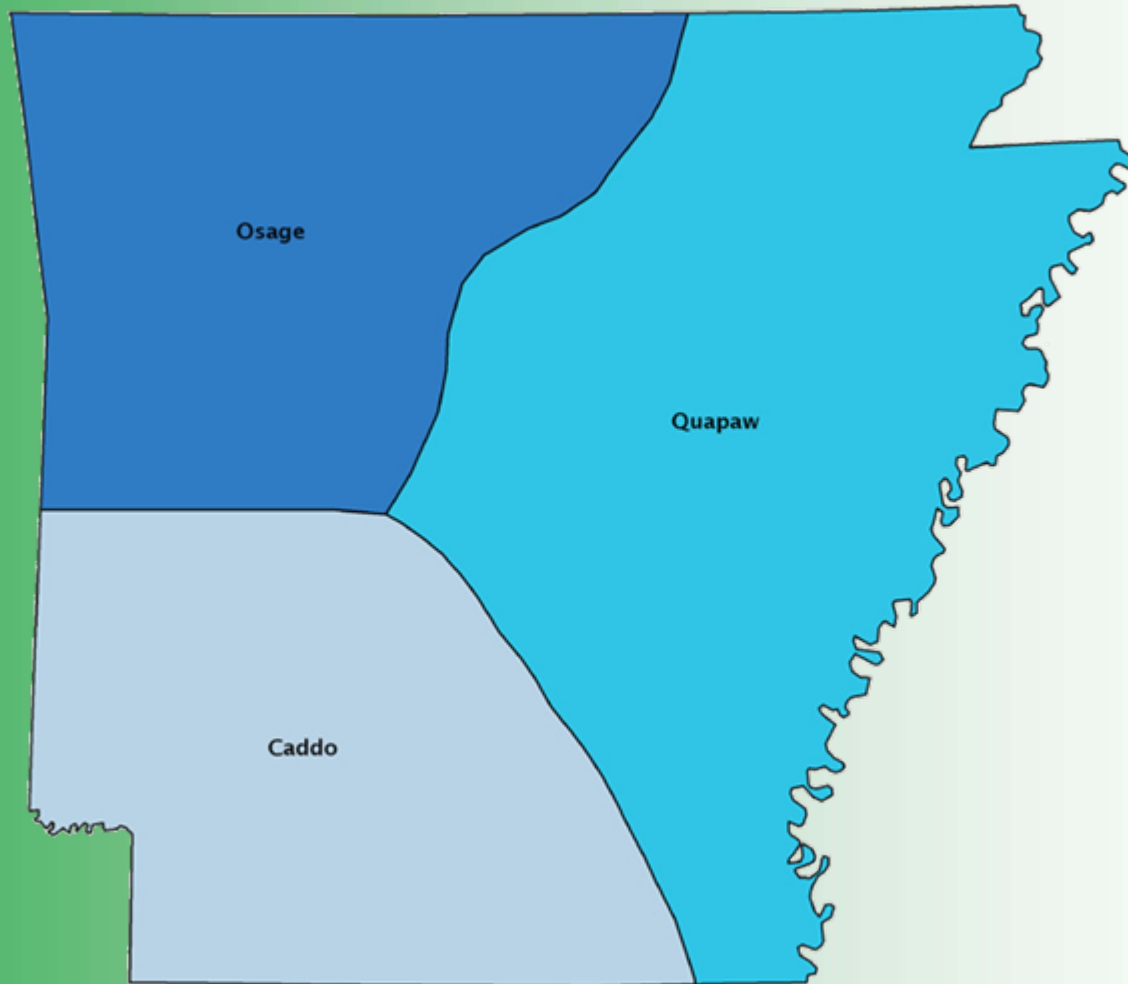
Meet Sequoyah, aka George Gist
and George Guess



Hand-colored lithograph depicting Cherokee leader Sequoyah, who lived in Western Arkansas from 1824 to 1828, holding a copy of the Cherokee syllabary he developed; by F.W. Greenough, circa 1836.

<http://www.encyclopediaofarkansas.net/encyclopedia/media-detail.aspx?mediaID=5998>

Do You Know the Major Tribes of Native Arkansans?



Do You Know the Major Tribes of Native Arkansans?

Jacques Marquette, addressing the Quapaw Indians in Arkansas in June 1673, while fellow explorer Louis Joliet looks on; taken from John Hugh Reynolds's *Makers of Arkansas History*.

<http://www.encyclopediaofarkansas.net/encyclopedia/media-detail.aspx?mediaID=4081>



Do You Know the Major Tribes of Native Arkansans?



President Calvin Coolidge with four Osage Indians; the White House is in the background. The Osage, who spoke the Sioux language, formerly inhabited the region between the Missouri and Arkansas rivers. On June 2, 1924, President Coolidge signed a bill granting Indians full citizenship.

<http://www.encyclopediaofarkansas.net/encyclopedia/media-detail.aspx?mediaID=7356>

Caddo Dancers



<http://www.encyclopediaofarkansas.net/encyclopedia/media-detail.aspx?mediaID=3972>

Transportation in Arkansas



Horse-drawn buggy; circa 1900.

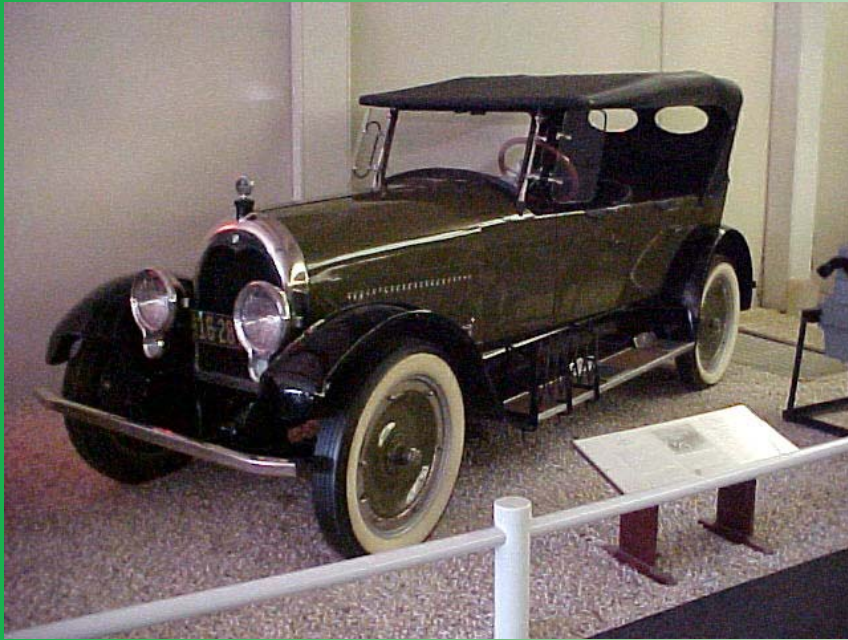
<http://www.encyclopediaofarkansas.net/encyclopedia/media-detail.aspx?mediaID=6612>

The steamboat *Handy*, one of the last boats to navigate Bayou Bartholomew; circa 1905.

<http://www.encyclopediaofarkansas.net/encyclopedia/media-detail.aspx?mediaID=3966>



Transportation in Arkansas



A 1923 Arkansas-built Climber Model 6-50 Four Door Touring Car, one of only two Climbers still known to exist. Climber was the only motor car manufacturer in Arkansas. Both are on display at the Museum of Automobiles on Petit Jean Mountain in Conway County.

<http://www.encyclopediaofarkansas.net/encyclopedia/media-detail.aspx?mediaID=5900>



Frisco locomotive at Fort Smith (Sebastian County); circa 1920.

<http://www.encyclopediaofarkansas.net/encyclopedia/media-detail.aspx?mediaID=6052>

Transportation in Arkansas



Biplane flying
over Leslie
(Searcy
County); 1912.

Transportation in Arkansas



JB Hunt
Trucking

Northwest
Arkansas
Regional
Airport



ADE 2nd Grade Social Studies Frameworks Addressed in this PowerPoint

- Strand: Geography
 - Standard 1: Physical and Spatial
 - Students shall develop an understanding of the physical and spatial characteristics and applications of geography.
- G.1.2.2
 - Locate the county in which the student lives on an Arkansas map
- G.1.2.3
 - Locate the capital of Arkansas

ADE 2nd Grade Social Studies Frameworks Addressed in this PowerPoint

- Strand: History
 - Standard 6: History
 - Students shall analyze significant ideas, events, and people in world, national, state, and local history and how they affect change over time.
- H.6.2.2
 - Identify state symbols of Arkansas:
 - gem
 - mineral
 - rock
 - mammal
 - anthem

ADE 2nd Grade Social Studies Frameworks Addressed in this PowerPoint

- Strand: History
 - Standard 6: History
 - Students shall analyze significant ideas, events, and people in world, national, state, and local history and how they affect change over time.
- H.6.2.3
 - Discuss historical people of Arkansas
 - (e.g., Bill Clinton, Daisy Bates, Sequoyah)

ADE 2nd Grade Social Studies Frameworks Addressed in this PowerPoint

- Strand: History
 - Standard 6: History
 - Students shall analyze significant ideas, events, and people in world, national, state, and local history and how they affect change over time.
- H.6.2.11
 - Recognize American Indian tribes of Arkansas:
 - Osage
 - Quapaw
 - Caddo
- H.6.2.12
 - Compare past and present means of transportation and communication in Arkansas